



ON DESTINATION TO

# ALOR - KOMODO NATIONAL PARK

10 Days & 9 Nights



10 Days | 9 Nights

## Giants of the Deep & Islands of Fire

Sailing from the remote islands of Alor to the legendary realm of Komodo traces a route along one of nature's grandest migrations. This voyage follows the path of whales and dolphins through a world shaped by fire and sea, where volcanic peaks rise above coral gardens, and ancient villages hold traditions as deep as the ocean.

Begin in Alor, a land of towering volcanoes and thriving reefs, where migrating cetaceans glide through the narrow straits of Pantar and Lembata. Explore traditional fishing villages and witness the artistry of ikat weavers before continuing west toward Flores. As Mutiara Laut sails through Riung's tranquil lagoons and into the fabled waters of Komodo National Park, encounter mantas, dragons, and the untamed beauty that defines Indonesia's heart.





# Marine Ecologist

Joining this voyage is Olive Andrews, she is an Academic at the University of Auckland's Institute of Marine Science where she teaches ocean governance in the post graduate Master of Marine Conservation.

A marine scientist with 20 years' experience in marine programme management, Olive is an ocean policy advisor to governments, NGO's and industry on the design and implementation of large scale marine protected areas and the science and management of migratory marine species.

After earning a degree in Marine Science and Management from Southern Cross University and a commercial captain's ticket, Olive went on to hold marine program management roles with Whales Alive, IFAW, Conservation International and the Antarctic and Southern Ocean Coalition. She is an Executive of the South Pacific Whale Research Consortium, conducting whale research projects in New Zealand, Palau, Timor Leste, Niue and Antarctica.

A Senior Polar Guide, Olive enjoys guiding marine research and tourism expeditions from the tropics to the poles, teaching people about the fascinating natural world. When Olive is not at sea she resides on Waiheke Island, New Zealand, plays the guitar, and makes chutney.



## Flores Sea



## Anchorage

- 1 Alor
  - 2 Tera
  - 3 Beang
  - 4 Pulau Rusa
  - 5 Lamalera
  - 6 Ile Ape Bay
  - 7 Maumere
  - 8 Riung Island
  - 9 Rinca
  - 10 Labuan Bajo
- ✈ Airport  
⚓ Port

## Getting There

Mutiara Laut moors at the closest harbor to the airport and transfers are provided by private vehicle directly to our waiting tenders. All airports are serviced by scheduled airlines, while selected airports can accommodate private jets.

## Airports

Arrival: Mali Airport (ARD)  
Multiple International and domestic connection per day from North America, Europe & Asia  
Check-in: From 8am

Departure: Labuan Bajo Airport (LBJ)  
Check-out: Until 11am



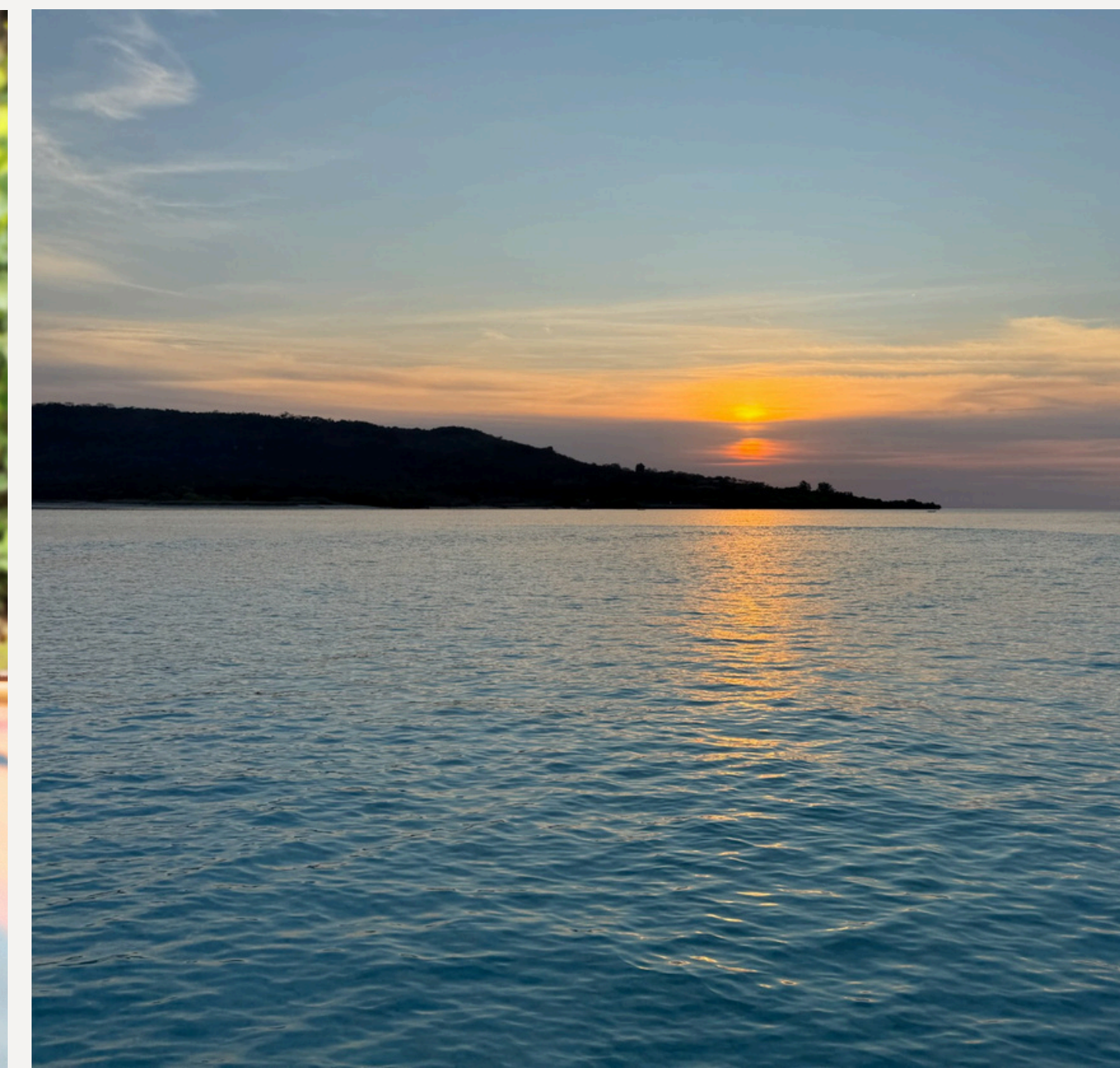
Day

01

## Arrival at Alor

Upon arrival in Alor, you'll be warmly welcomed by the crew of Mutiara Laut. After settling into your cabin and enjoying a refreshing drink on deck, we set sail toward Alor Kecil for your first check dive, a gentle introduction to the region's pristine underwater world.

Beneath the surface, vibrant coral gardens and a kaleidoscope of marine life offer a glimpse of the adventures ahead. As dusk falls, relax on deck with the breeze and the fading light over Alor's volcanic silhouette.



Day

02

## Pulau Tera | Whale Observation

This morning, we sail toward Tera Island for a vivid dive among lively reefs teeming with marine life. Afterward, step ashore at Reta Island, a charming weaving village where locals still handcraft intricate textiles using natural dyes and traditional looms.

In the afternoon, we'll explore the southern part of the Pantar Strait near Treweng Island to observe the many migrating species of cetaceans. Olive will be conducting scientific registrations using specialized equipment, offering guests a rare opportunity to witness marine research in action.



Day

03

## Beang Village | Whale Observation

Today, we explore the southern coast of Pantar Island, where the small fishing village of Beang lies tucked between sea and volcano. We'll go ashore to greet the locals and seek permission to hike toward Sirung Volcano for sweeping views of the surrounding ocean.

In the afternoon, the focus returns to whale observation along the oceanic step near Pantar's southern coast. Weather permitting, we'll anchor nearby for a peaceful night beneath the stars.



Day  
04

## Pulau Rusa | Kangge Islands | Whale Observation

This morning, we navigate toward the western coast of Pantar, where a trio of islands, Rusa, Kangge, and their neighbors, awaits exploration. Discover untouched beaches of fine white sand, vibrant reefs ideal for diving and snorkeling, or visit one of the small fishing communities that dot the shores.

The afternoon will once again be dedicated to observing whales along the oceanic step. Depending on weather conditions, Mutiara Laut will anchor nearby for the night.

Day  
05

## Lamalera Village | Whale Observation

Weather permitting, we will approach the traditional village of Lamalera, one of the last communities in Indonesia still permitted to hunt whales for subsistence using age-old methods passed down through generations.

In the afternoon, we continue our whale observations along the southern coast of Lembata Island before Mutiara Laut sets course northward across the Lembata Strait.

Day  
06

## Ile Ape Bay | Watu Peni Islands

Dive and snorkel in the clear waters of Ile Ape Bay, where colorful reefs thrive beneath the shadow of the majestic volcano. Later, visit Jontona Village, nestled at its base, to experience the warmth and tradition of Alor's coastal culture.

As the day unfolds, we sail toward Watu Peni Island for a relaxed beach setup or a barbecue under the stars, a serene close to another day of discovery.



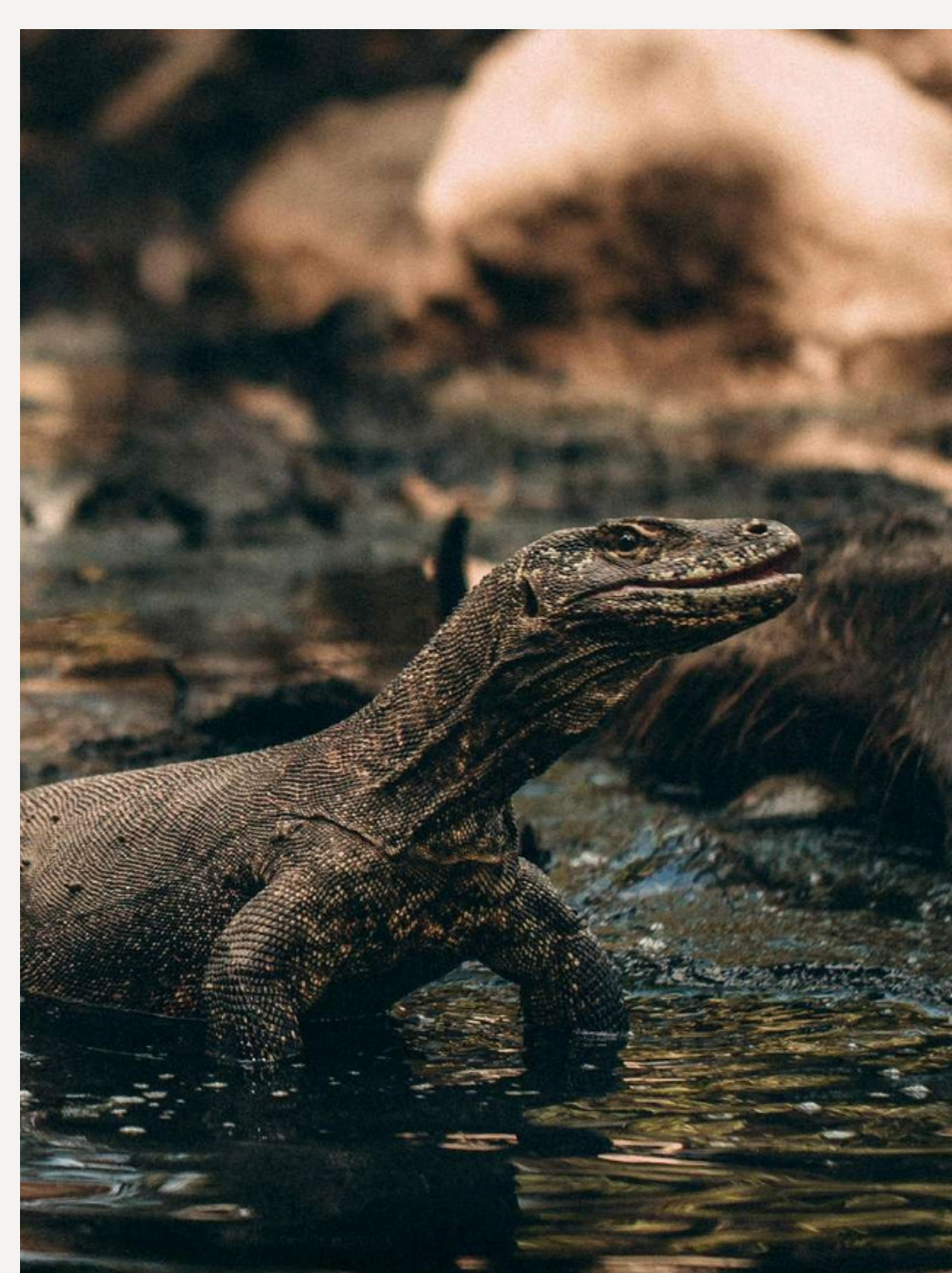
Day  
07

## Pangabatang Island | Maumere

We begin the day exploring the underwater wonders of Pangabatang Island, a diver's dream. The reefs here bloom with life, from swirling anthias to intricate coral formations.

Around midday, Mutiara Laut sails toward Maumere, where we'll visit Watublapi Village. Here, local artisans create exquisite ikat textiles using traditional looms and natural dyes, each pattern telling a story of Flores' cultural heritage.

In the evening, we set sail toward the Riung Archipelago.



Day  
08

## Riung Islands

Today we arrive at the Riung Islands, locally known as Pulau Tujuhbelas, or the Seventeen Islands, a cluster of islets scattered across turquoise waters. Dive, snorkel, or paddle through serene lagoons teeming with marine life.

As daylight softens, gather for a relaxed beach barbecue, surrounded by the tranquil hum of the ocean and the gentle evening breeze.

Day  
09

## Rinca | Mawan

This morning, Mutiara Laut enters the legendary waters of Komodo National Park. We go ashore on Rinca Island to encounter the legendary Komodo dragons in their natural habitat, a rare glimpse into a prehistoric world.

Continue to Mawan, one of the park's most iconic dive and snorkeling sites, where graceful manta rays often glide above colorful coral gardens.

As dusk approaches, we anchor near Kalong Island to witness thousands of flying foxes taking flight across the twilight sky, a breathtaking natural spectacle.

Day  
10

## Labuan Bajo

After breakfast onboard, bid farewell to the Mutiara Laut crew before your transfer to the airport. As the horizon fades behind you, carry with you memories of a voyage where time slowed, nature revealed her wonders, and the sea shared its timeless stories.

This is a sample itinerary. The itinerary may be altered based on the weather and sea conditions.



MUTIARA LAUT  

---

Voyage

